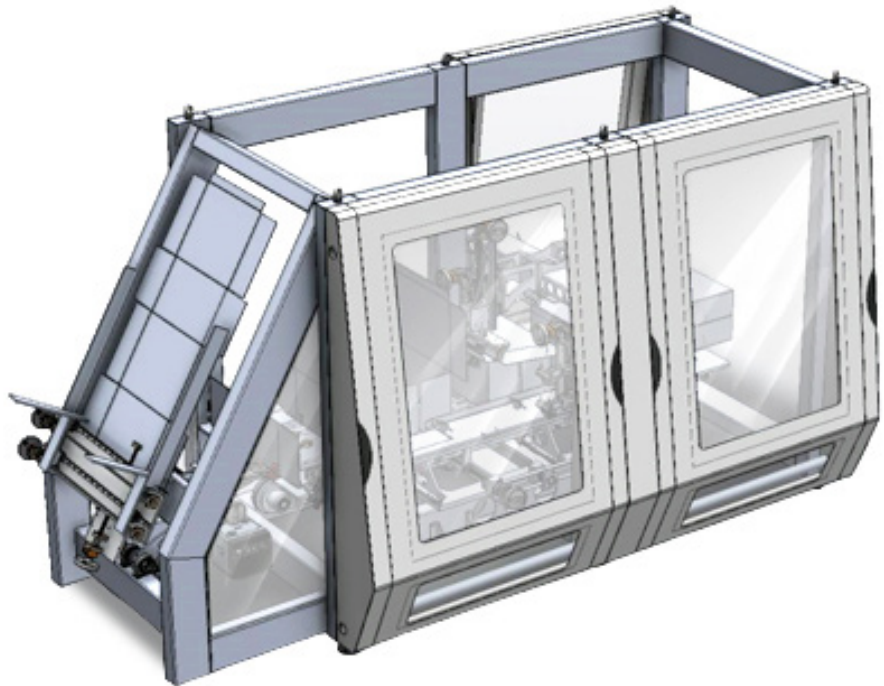


Modular, compact and flexible solution for wrap cases.

An accessible and user-friendly equipment, designed to handle flexible, rigid or semi-rigid packages. It is adaptable to the most convenient grouping system according to the characteristics of the product.

The NWG-10 allows productions up to 10 cases/min. Its technology is built to operate with soft movements, treating the product in a delicate way.



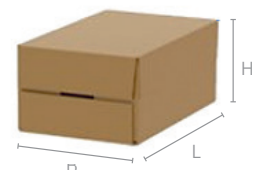
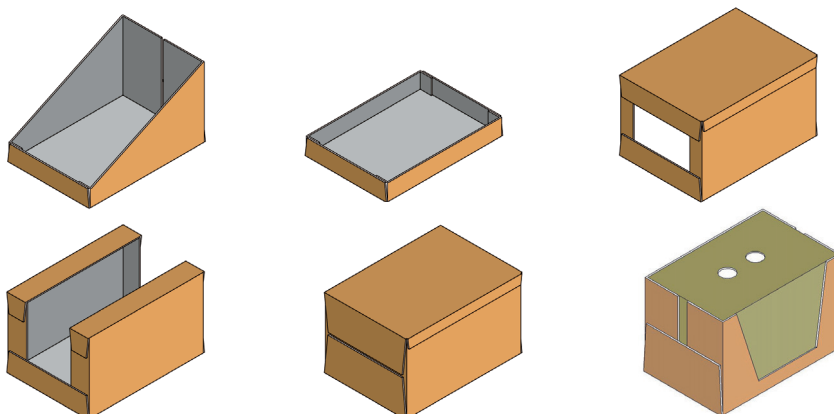
## Features

- ✘ Production up to 10 cartons/min
- ✘ 2 stations: one of forming and filling and one for closing
- ✘ Servo-controlled system.
- ✘ Modular structure composed by grouping unit and case packing unit, with closing by Hot Melt
- ✘ Optional blanks magazine for high capacity and autonomy for up to 500 carton sheets.
- ✘ Automatic format changeover (optional)

## Benefits

- ✘ Ergonomic and compact design
- ✘ Easy access for maintenance
- ✘ Versatile machine easy to adapt to different formats
- ✘ HMI (Human-Machine Interface) screen with complete and intuitive software

## Box types



	L	B	H
Max	400	300	300
Min	200	150	100